

Strathmore  
**Community Bank** Branch

**B** Bendigo Bank



# 2025 EDFL Umpire Manual



## Contents

Welcome.....	3
2025 EDFL Umpiring Environment Policy.....	3
2025 EDFL Umpire Values.....	6
EDFL Umpire Code Of Conduct.....	7
EDFL Umpire Role Summaries .....	7
2025 EDFL Umpire Coaches .....	8
2025 EDFL Fixture Schedule .....	9
2025 EDFL Junior Modified Rules.....	11
2025 EDFL Specific Rules .....	12
Abuse .....	12
Accreditation .....	12
Affiliation.....	13
Age Eligibility .....	14
Appointment Process .....	15
Availability.....	16
Cards .....	16
Changerooms.....	18
Club Officials.....	20
Conflict Resolution .....	26
EDFL Extreme Weather Policy .....	27
Feedback .....	30
Finals Selection .....	31
Forfeit and Non-Completion of Matches .....	32
Hudl.....	33
Injury.....	33
Last Disposal.....	34
Match Communication Units .....	35
Match Paperwork .....	35
Match Report .....	35
Best & Fairest Voting .....	36

Incident Reports .....	36
Match Preparation.....	36
Arrival .....	36
Checklist .....	37
Melee Rule .....	37
Officials HQ.....	38
Setting Leaves .....	38
WWCC Details .....	39
Pathway Programs .....	39
AFL Vic Pathway Program .....	39
Junior Interleague Umpire Program .....	40
Junior To Senior Pathway Program – Junior Field .....	41
Pay.....	41
Playing Conditions .....	44
Minimum/Maximum Playing Numbers On Field.....	44
Quarter Length & Break Lengths .....	44
Finals Extra Time Procedure .....	45
Player Uniform & Equipment .....	46
Reportable Offences .....	47
Spirit Of Fair Play Policy .....	48
Starting Positions .....	48
Warnings.....	49
Free Kicks .....	49
Team App .....	50
Training .....	50
Tribunal .....	51
Working With Children Check .....	52
Uniform.....	52
On Field Uniform .....	53

## Welcome

Welcome to Season 2025 as an EDFL Umpire and congratulations on taking up the challenge! To our group of new umpires, we hope you enjoy the experience, whether you are in the goals, on the boundary or in the field. We also welcome all those umpires who are returning for another season. We hope you have had a good rest and are ready for the next step in your umpiring experience.

***An umpire must always act in a manner which places the umpire above reproach. You are expected to act with integrity, trust and respect, as you are representing the EDFL, the umpiring group and yourself***

Umpiring will help build your confidence, teach you to make important decisions under pressure and improve your interpersonal and communication skills. This umpiring manual has been designed as a resource for you, primarily to assist you in your role as an EDFL Umpire. As part of your role and responsibilities you should read this manual and become very familiar with its contents and you should also have it in your bag on match day as a quick reference guide. We want you to enjoy your involvement in the game and show respect for officials, players and your colleagues. Our coaching panel is there to assist and develop each umpire to make their experience as enjoyable as possible. You are an equal part of a team during game day and you are a key member of our 700 strong EDFL Umpiring Team.

***Good luck with your umpiring in the 2025 season!***

## 2025 EDFL Umpiring Environment Policy

We want all umpires (especially children and young people) who participate in football to be safe, feel safe and umpire safe. Umpires and officials across AFL programs and community clubs are required to follow safeguarding policies, procedures and codes of conduct and should make themselves familiar with those relevant to their roles.

## Changerooms

*Changeroom facilities in grounds that are appropriate for any gender and ensure shared facilities offer some privacy for young people to change/shower.*

What this looks like:

- All umpires must change in privacy at training and matches. This means changing in an appropriate toilet/cubicle if available. Otherwise, umpires must leave the changerooms if other umpires want to get changed. Umpires will need to turn up to training or matches earlier to allow enough time for all umpires to change in privacy.
- If showering, you must take your clothes and towel with you to get changed into before going back to the shared space.
- When umpires are getting changed, there is to be no phone use in the changerooms.

**Communication**

*Using and encouraging others to use, appropriate, positive, respectful and inclusive language.*

What this looks like:

- Guidance that is positive, helpful, and focused on the child or young person's football/umpiring skills and game, not them as a person.
- Language that is clear and encouraging and that can be easily understood.
- Language that is welcoming, inclusive and appropriate for the use within the entire umpiring group.
- Online communication must be available to a parent or carer and include all appropriate umpires.
- Ensuring that all online communication with other umpires is appropriate.

**Boundaries**

*Establishing appropriate boundaries to ensure that all umpires feel safe, welcomed, and included.*

#### What this looks like:

- Do not share information or take photos of other umpires (especially children and young people) without their permission and their parents or carers permission.
- Always behave appropriately when around children and young people.
- Adults should not be left alone with people under the age of 18 where possible. This includes in change rooms, after training or in coaching situations.

#### **Reporting**

- If you see or hear something that does not feel right it is your responsibility to report it to the Child Safety Officer (CSO) an umpire coach, trusted umpire or an UA Committee Member.
- This person will pass on the required information to the appropriate person whether this is the CSO, the EDFL or police.
- You can also report concerns to the AFL or police directly if necessary.

## 2025 EDFL Umpire Values

The EDFL Umpiring Department, Umpire Coaches and EDFLUA have developed the below EDFL Umpire Values. These values will be taken into consideration during assessment as well as in selecting umpires for games and finals.



### EDFL Umpire Values

#### Safe, Inclusive & Fun

We do our best to ensure that our environment is safe, fun and inclusive

We accept and celebrate every umpire no matter their background, ability or beliefs.

We behave in a way that is inclusive to all umpires no matter their background, ability or beliefs.

#### Be Your Best Self

We give our best at training and on gamedays

We represent umpiring in the EDFL to the best of our ability

We allow umpires to be their best self no matter their background, ability, beliefs or learning style

#### Respect

We are respectful to each other at training and on gamedays

We respect players, coaches and officials on gamedays

We respect the game by acting with integrity at all times

#### Accountability

We take ownership of our performance at training and on gamedays

We are appreciative and utilise the skills and knowledge within the umpiring program

We accept that we will make mistakes and use these as learning opportunities for the future



## EDFL Umpire Code Of Conduct

Umpires are required to agree to the 2025 EDFL Umpire Code of Conduct. This can be found [here](#).

## EDFL Umpire Role Summaries

Umpiring Role	Role Summary
Umpire Coordinator	Oversee all aspects of the EDFL Umpiring program. Responsible for talent pathway, recruitment and retention, strategy and governance
Administration Assistant	Responsible for administrative support to the umpire coordinator as well as assisting with OHQ and other behind-the-scenes administration.
Head Coach	Oversee the coaching program at the EDFL as well as assisting in developing the coaching plan. Coach of the Senior field umpires
Boundary Umpire Coach	Responsible for the training program, appointments and coaching of the boundary umpires
Goal Umpire Coach	Responsible for the training program, appointments and coaching of the goal umpires
Junior Field Coach	Responsible for the training program, appointments and coaching of the junior field umpires
Women & Girls Liaison	Heads the Women & Girls Academy and events that are run as part of this

	academy. Contact person for Women & Girls umpires in the EDFL.
Fitness Coach	Responsible for the fitness program for umpires in the EDFL
Junior Training Centre Coach	Responsible for implementing the junior field training program at their junior training centre

## 2025 EDFL Umpire Coaches

Umpiring Role		Contact
Umpire Coordinator	Michael Willcox	0434 689 690
Head Coach	Brett Pallini	0418 371 386
Boundary Umpire Coach	Shane Mallia	0410 659 951
Goal Umpire Coach	Michael Blair	0410 925 865
Junior Field Coach	Steve Marrari	0412 218 135
Women & Girls Liaison	Amar Yassine	
Senior Field Assistant	Alex Turner	
Senior Field Assistant	Jack Gordon	
Boundary Development	Howard Campey	
Boundary Development	Angus Drenen	
Boundary Development	Patrick Damato	
Goal Development	John Bladen	
Goal Development	Tom Ennis	
Goal Development	Bill Dale	
Ascot Vale Junior Coach	Jimmy Hammond-Collins	
Coburg Junior Coach	Ky Shennan	
Craigieburn Junior Coach	Steve Marrari	
Delahey Junior Coach	Howard Campey	
Jacana Junior Coach	Rocky Tranquillo	
Sunbury Junior Coach	Jesse Ramsay	

## 2025 EDFL Fixture Schedule

Date	Premier Men (Top 5)	Div 1 Men (Top 5)	Div 2 Men (Top 4)
5-Apr	Round 1	Round 1	Round 1
12-Apr	Round 2	Round 2	Round 2
19-Apr	<i>Easter</i>	<i>Easter</i>	<i>Easter</i>
26-Apr	Round 3	Round 3	Round 3
3-May	Round 4	Round 4	Round 4
10-May	Round 5	Round 5	Round 5
17-May	Round 6	Round 6	Round 6
24-May	Round 7	Round 7	Round 7
31-May	Round 8	Round 8	Round 8
7-Jun	<i>Kings Birthday</i>	<i>Kings Birthday</i>	<i>Kings Birthday</i>
14-Jun	Round 9	Round 9	Round 9
21-Jun	Round 10	Round 10	Round 10
28-Jun	Round 11	Round 11	Round 11
5-Jul	Round 12	Round 12	Round 12
12-Jul	Round 13 (Split)	Round 13	Round 13
19-Jul	Round 13 (Split)	Round 14	Round 14
26-Jul	Round 14	Round 15	Round 15
2-Aug	Round 15	Round 16	Round 16
9-Aug	Round 16	Round 17	Round 17
16-Aug	Round 17	Round 18	Round 18
23-Aug	Round 18	Quali/Elim	Semis
30-Aug	Quali/Elim	Semis	Prelim
6-Sep	Semis	Prelim	Grand Final
13-Sep	Prelim	Grand Final	
20-Sep	Grand Final		

Date	Premier Women (Top 4)	Div 1 & 2 Women (Top 4)
5-Apr	Round 1	Round 1
12-Apr	Round 2	Round 2
19-Apr	<i>Easter</i>	<i>Easter</i>
26-Apr	Round 3	Round 3
3-May	Round 4	Round 4
10-May	Round 5	Round 5 (Split)
17-May	Round 6	Round 5 (Split)
24-May	Round 7	Round 6
31-May	Round 8	Round 7
7-Jun	<i>Kings Birthday</i>	<i>Kings Birthday</i>
14-Jun	Round 9	Round 8
21-Jun	Round 10	Round 9
28-Jun	Round 11	Round 10
5-Jul	Round 12	Round 11
12-Jul	<i>bye</i>	<i>bye</i>
19-Jul	Round 13	Round 12
26-Jul	Round 14	Round 13
2-Aug	Round 15	Round 14
9-Aug	Round 16	Semis
16-Aug	Semis	Prelim
23-Aug	Prelim	Grand Final
30-Aug	Grand Final	
6-Sep		
13-Sep		
20-Sep		

Date	Thirds Men (Top 4)	Date	Juniors (Top 4)
4-Apr	Round 1	6-Apr	Round 1
11-Apr	Round 2	13-Apr	Round 2
18-Apr	Easter	20-Apr	Easter
25-Apr	ANZAC Day	27-Apr	Round 3
2-May	Round 3	4-May	Round 4
9-May	Round 4	11-May	Round 5
16-May	Round 5	18-May	Round 6
23-May	Round 6	25-May	Round 7
30-May	Round 7	1-Jun	Round 8
6-Jun	Kings Birthday	8-Jun	King's Birthday
13-Jun	Round 8	15-Jun	Round 9
20-Jun	Round 9	22-Jun	Round 10
27-Jun	Round 10	29-Jun	Round 11
4-Jul	Round 11	6-Jul	Round 12
11-Jul	Round 12	13-Jul	Bye
18-Jul	Round 13	20-Jul	Round 13
25-Jul	Round 14	27-Jul	Round 14
1-Aug	Semis	3-Aug	Semis
8-Aug	Prelim	10-Aug	Prelim
15-Aug	Grand Final	17-Aug	Grand Final

## 2025 EDFL Junior Modified Rules

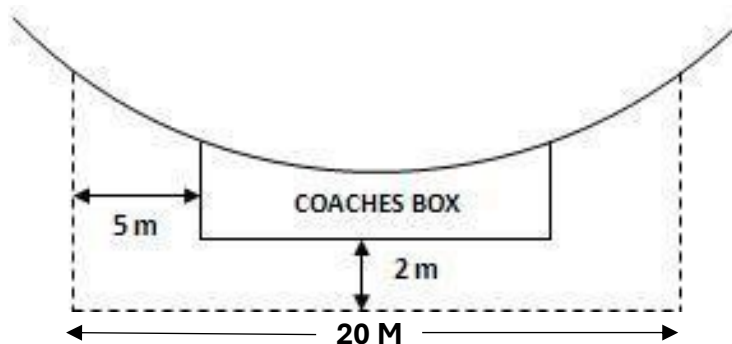
2025 MODIFIED RULES AFL JUNIOR LAWS OF THE GAME										
JUNIOR GIRLS AND BOYS										
	Under 8 Mixed	Under 10 Mixed	Under 12 Mixed	Under 14 Mixed	Under 16 Boys	Under 8 Girls	Under 10 Girls	Under 12 Girls	Under 14 Girls	Under 16 Girls
ADMINISTRATION										
Ground size	100m x 80m (recommended max.) and divided into 3 equal zones (thirds)	135m x 80m (Max.)	Standard	Standard	Standard	100m x 80m (recommended max.) and divided into 3 equal zones (thirds)	135m x 80m (Max.)	Standard	Standard	Standard
Zones	✓	✗	✗	✗	✗	✓	✗	✗	✗	✗
Min. players for game	8	14	14	14	14	8	12	12	12	12
# players on ground	12 to 15 a side	18	18	18	18	12 to 15 a side	18	18	18	18
# players on interchange	6	6	6	6	6	6	6	6	6	6
Ball type	Syn Only	Syn Only	Syn Only	Leather	Leather	Syn Only	Syn Only	Syn Only	Syn Only	Leather
Ball size	2	2	3	4	5	2	2	3	3	4
Quarter duration (mins)	10	12	15	15	20	10	12	12	15	15
Break length 1/4 - 1/2 - 3/4 time	5-5-5	5-10-5	5-10-5	5-10-5	5-10-5	5-5-5	5-10-5	5-10-5	5-10-5	5-10-5
UMPIRES										
# field umpires	Club - 1	1 or 2	1 or 2	2	2	Club - 1	1 or 2	1 or 2	2	2
Boundary umpires	✗	✗	✗	✗	✗	✗	✗	✗	✗	✗
LAWS										
Tackling	Modified	Modified	✓	✓	✓	Modified	Modified	✓	✓	✓
Bumping	✗	✓	✓	✓	✓	✗	✓	✓	✓	✓
Stealing the ball	✗	✓	✓	✓	✓	✗	✓	✓	✓	✓
Barging	✗	✗	✓	✓	✓	✗	✗	✓	✓	✓
Smothering	✗	✓	✓	✓	✓	✗	✓	✓	✓	✓
Fending off	✗	✗	✓	✓	✓	✗	✗	✓	✓	✓
Shepherding	✗	✓	✓	✓	✓	✗	✓	✓	✓	✓
Bouncing the ball	1 max	1 max	N/A	N/A	N/A	1 max	1 max	N/A	N/A	N/A
Kicking off the ground	✗	✗	✗	✓	✓	✗	✗	✗	✓	✓
Ball ups	Nominated players of equal size	✓	✓	✓	✓	Nominated players of equal size	✓	✓	✓	✓
Throw-ins	✗	✗	✗	✗	✗	✗	✗	✗	✗	✗
Distance over which marks are paid	0m	10m	15m	15m	15m	0m	10m	15m	15m	15m
Distance penalty	✗	25m	25m	50m	50m	✗	25m	25m	50m	50m
Deliberate out of bounds	✗	✗	✗	✓	✓	✗	✗	✗	✓	✓
Deliberately rushed behind	✗	✗	✗	✓	✓	✗	✗	✗	✓	✓
COMPETITION DETAILS										
Complete Team Sheet	✓	✓	✓	✓	✓	✓	✓	✓	✓	✓
Premierships ladders/Finals	✗	✓	✓	✓	✓	✗	✓	✓	✓	✓
Scores kept	✗	✓	✓	✓	✓	✗	✓	✓	✓	✓
Record best players/goal kickers	✗	✓	✓	✓	✓	✗	✓	✓	✓	✓
League representative team selected	✗	✗	✓	✓	✓	✗	✗	✓	✓	✓
Coach allowed on-field	✓	✗	✗	✗	✗	✓	✗	✗	✗	✗
Runner	✗	✓	✓	✓	✓	✗	✓	✓	✓	✓
Water Person	✗	✗	✗	2 max	2 max	✗	✗	✗	2 max	2 max

## 2025 EDFL Specific Rules

### Exclusion Zone

An “Exclusion Zone” around both Coaches Boxes will be erected by the host club in all EDFL matches. Bollards and yellow/black hazard tape should be used.

The following dimensions are illustrated below:



### Abuse

The EDFL will strongly enforce a zero tolerance to umpire abuse. If abuse occurs:

- Minor abuse – free kick, 50m penalty or blue card
- Abusive, insulting or obscene language towards an umpire – yellow card and set penalty (see reportable offences list)
- Threatening language towards an umpire – red card (no set penalty)
- If abuse is continuous or results in the umpire not feeling safe (regardless of whether it is from players, officials or spectators), the umpire will call the game off.

### Accreditation

#### Modules

- Umpires are required to complete the Vilification and Discrimination before they will be able to be appointed to matches.
- It is strongly recommended that if you are a first-year umpire you also complete the Child Safety and Respectful Relationships module as well.

## Umpire Accreditation

- Umpires are required to complete accreditation relevant to their level of experience/ability.
- Accreditation is important to ensure that umpires are up-to-date with the relevant skills/knowledge they require to progress their umpiring.

## Affiliation

The EDFL aims to ensure that umpires are not put into a position where they are umpiring a team/club that they may have an affiliation with. It is important that umpires declare their affiliations as part of the registration process with Officials HQ and let their coach/head of umpiring know if they are appointed to a game where they think there may be an affiliation issue. The EDFL needs to know about any affiliation and may need to make decisions on appointments based on this. A guide to affiliation is:

Scenario	Need to declare if the following applies
Player	Plays/played with a club in the last 3 years. If you have played for more than one club, select your most recent club.
Coach	Coaches/coached with a club in the last 3 years. If you have coached for more than one club, select your most recent club.
Official	If you have helped an official role with a club in the last 3 years. If you have been involved with more than one club, select your most recent club.
Family Member	If a direct family member (e.g. parent/carer, partner or sibling) is involved as a player, coach or official for a specific team**
School	If you attend school with a more than half of a specific team**
Life Member	If you are a life member of an EDFL club.
Significant Service	If you have been involved as a player, coach or official for a specific club for a period of over 10 years.
Incident	If you have been involved in a major incident involving a certain team/club**

**\*\*When the situation is only a specific team within a club that you would have an affiliation issue with, you are best to inform your coach and the EDFL Umpiring Department ASAP\*\***

## Age Eligibility

To help ensure that umpires are placed in as safe, inclusive and fun environment as possible, the EDFL will be adopting the AFL's Umpire Eligibility Policy. This policy gives guidance around minimum ages for umpires and specifically for field umpires to ensure they are placed in an environment suited to their age, physical and social development.

The policy reads:

*A field Umpire must be twelve (12) years of age or older in the year prior to the applicable playing year and their eligibility to umpire a Competition age group is as per the following table:*

Competition Age Group	Minimum Age	Minimum DOB
U10	Turning 13	31/12/2012
U12	Turning 14	31/12/2011
U14	Turning 16	31/12/2009
U16 & above	Turning 17	31/12/2008

**\*Note: This table only applies to field umpires.**

The EDFL may appoint a field Umpire to a higher age group than that specified in the table above where it determines that there are exceptional and compelling circumstances that warrant such permission being granted.

In assessing whether there are exceptional and compelling circumstances, the EDFL will have regard to the Umpire's physical capacity, experience, skill level and social maturity along with any child safeguarding considerations.

A form will need to be signed off by a parent/guardian of any umpire that is going to umpire in an age group higher than what they qualify for before they are able to umpire in the higher age group.

For boundary and goal umpires, the EDFL's recommendation will remain that umpires should be turning 13 the year they commence as the league only provides umpires to U18.5 and older age groups until finals.

The final decision as to whether an umpire will be eligible to umpire in a higher age group will rest with the Umpire Manager.

## Appointment Process

The EDFL will aim to have appointments out as early as possible during the week. For senior games the aim will be to get these out either Monday or Tuesday where possible. For junior games the aim will be to get these out on Tuesday or Wednesday. Early in the season, junior grading can often delay the appointments process as the fixture is not released as early as later in the season. Umpires regularly and accurately updating their availability helps to make the appointment process as efficient as possible for coaches.

The following will be considered in the appointment process:

- The ability of the umpire – what level of game is the person capable of umpiring
- Commitment and demonstration of EDFL Umpire Values – is the umpire displaying the values expected of EDFL umpires
- The availability of the umpire – is there any availability constraints that may result in only being able to umpire at specific grounds/times
- Any affiliations – is the umpire not able to umpire specific teams/clubs due to an affiliation (See affiliation above)
- Fixturing – the EDFL aims to cover as many games as possible each weekend and this may result in umpires being appointed to specific games/grounds

- Umpire development - there are times where it is important for the EDFL to provide opportunities for umpires to develop their skills/ability by umpiring games of differing levels

## Availability

### Leaves

It is your responsibility to inform your coach if you are unavailable to umpire on a particular game day, by recording it in Officials HQ (under the leaves section), email or phone. If you know well in advance your unavailability (especially during school holidays) please advise your coach as early as possible. It is recommended that you inform your relevant coach at least 2 weeks prior if you are going to be unavailable. If you know unavailability earlier, then please advise it as soon as you know.

### Game Day

If you are sick or there are circumstances that mean you are unable to attend your match after you have accepted your appointment it is vitally important that you let your coach know. If you are unable to reach your coach then let the nominated EDFL contact know. This may give the coaches/EDFL contact the ability to find a replacement umpire or alert the competing clubs so they can have time to find a club umpire.

## Cards

**Blue, Yellow & Red Card      \*\* With all 3 cards players can be replaced immediately\*\***

- **Blue** Card (Cooling Off No Report)

Blue Card is used to rest and settle down a player who is aggressive or creating potential trouble on the field. Where a Field Umpire deems that a player is behaving in an unduly aggressive and unruly manner or in any manner that would bring the game into disrepute, that player will be:

- 1) Shown a Blue Card
- 2) Asked to leave the playing surface immediately

- 3) Not be eligible to return to the playing surface until 15 minutes playing time has elapsed from the time the player left the ground following the Blue Card, (not including any quarter breaks that occur)

- **Yellow** Card

Yellow Card is for reports which the player would be offered a set penalty (\*\*Refer Set Penalty Reference Sheet\*\*). Where the reporting umpire deems a player has offended and breached the Laws of Australian Football (Law 22.2) that player will be reported and after the game would entitle the player to take a set penalty. That player will be:

- 1) Shown a Yellow Card
- 2) Asked to leave the playing surface immediately
- 3) Not be eligible to return to the playing surface until 15 minutes playing time has elapsed from the time the player left the ground following the Yellow Card, (not including any quarter breaks that occur)

- **Red** Card

Red Card is used for a reportable incident that would go directly to the tribunal and the reported player would not be offered a set penalty (\*\*Refer Umpire Report Sheet\*\*).

Where the reporting umpire deems the player's, conduct is of such a serious nature that the player should not participate any further in the game, that player shall be reported and will be:

- 1) Shown a Red Card
- 2) Asked to leave the playing surface immediately
- 3) Not eligible to participate at all for the remainder of that match

### **Issuing a Send Off Card**

Where a Field Umpire proposes to issue a Red, Yellow or Blue Card to a player, the Umpire shall:

- 1) Show the player either a Red, Yellow or Blue Card by holding the Card above the umpire's head for a period of five (5) seconds
- 2) Inform the player that they are to leave the field immediately

- 3) Again, hold that Card above the umpire's head for a further period of five (5) seconds in the direction/s of the interchange bench of the offending team and in the direction of the timekeepers
- 4) Ensure the player(s) that have been shown a blue, yellow, or red card have left the playing surface before recommencing play
- 5) The Timekeepers shall determine when the 15-minute time period has elapsed

### **Blue Card (Coach)**

An expansion of the blue card system was introduced into the EDFL in season 2023. A coach will be shown a blue card and a free kick will be paid if behaviour from, or close to their coaching box, is deemed to be abusive or brings the game into disrepute.

If this behaviour continues, the coach will be shown a second blue card and a free kick and 50m penalty will be paid against the team.

If a further infringement occurs, the coach will be shown a red card and will not be able to continue coaching for the remainder of the match. They will need to leave their team's coaching box and will not be able to address their team during quarter breaks.

**\*\*A reminder that it is the coach and/or team manager's responsibility to control behaviour from, or close to, their coaching box.**

## **Changerooms**

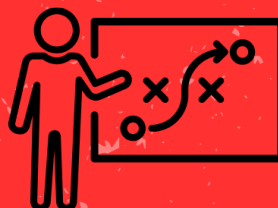
The changerooms are an area that should be safe and secure for umpires before, at half time and at the completion of games. A few tips to help ensure that this is achieved:

### **People allowed in the changerooms:**

- Other officiating EDFL umpires
- EDFL umpire coaches and board members/officials
- Club team managers

We ask that you do not invite other players/officials/spectators into the changerooms as this can cause issues. Please make sure that you do not discuss incidents that have occurred during the game with anyone outside of the umpiring panel and umpiring officials (e.g. coaches and EDFL umpiring staff). If an incident/report has occurred during your match we also ask that you do not discuss/spread information about the incident/report as this can lead to further issues with incorrect/inaccurate information being spread.

**Never leave valuables in the changerooms at training or on match days. On matchdays leave the valuables with the canteen, matchday official or umpire escort. If possible, ask the home club to lock the changerooms after you have left them to ensure your possessions are safe**



## COACHES

DO ✓	DON'T ✗
PROVIDE POSITIVE ENCOURAGEMENT TO YOUR PLAYERS	TALK TO OPPOSITION PLAYERS OR OFFICIALS DURING PLAY
ENCOURAGE PLAYERS TO PLAY IN THE RIGHT SPIRIT	YELL AT THE UMPIRES OR QUESTION THEIR DECISIONS
CONTROL THE BEHAVIOUR OF COACHES & EXCLUSION ZONE	LEAVE THE COACHES' BOX DURING PLAY
BE A LEADER IN PROMOTING RESPECT FOR OFFICIALS & UMPIRES	SET A BAD EXAMPLE FOR PLAYERS, OFFICIALS & SPECTATORS



## MATCH DAY OFFICIAL

DO ✓	DON'T ✗
ENSURE THAT SPECTATORS ARE NOT ATTENDING HUDDLES AT QUARTER BREAKS	TALK TO OPPOSITION PLAYERS
ENCOURAGE SPECTATORS TO DISPLAY POSITIVE BEHAVIOUR	YELL AT THE UMPIRES OR QUESTION OR MAKE COMMENT ON THEIR DECISIONS
ACTIVELY CHECK IN WITH UMPIRES AT QUARTER BREAKS	ESCALATE SITUATIONS OR CONFLICT
REPORT SERIOUS ISSUES TO CLUB OFFICIALS OR EDFL OFFICIALS	ENCOURAGE OR ADD TO POOR PLAYER OR SPECTATOR BEHAVIOUR



## WATER CARRIER

DO ✓	DON'T ✗
PROVIDE POSITIVE ENCOURAGEMENT TO YOUR PLAYERS	TALK TO OPPOSITION PLAYERS OR BE INVOLVED IN ANY ON-FIELD ALTERCATIONS
POSITION YOURSELF OUTSIDE THE BOUNDARY LINE ADJACENT TO THE 50M ARC	YELL AT THE UMPIRES OR QUESTION THEIR DECISIONS
PROVIDE WATER TO PLAYERS AFTER GOALS	COACH YOUR PLAYERS
PROVIDE WATER TO UMPIRES AFTER GOALS	STAY ON THE GROUND FOR LONG PERIODS OF TIME



## UMPIRES ESCORT

DO ✓	DON'T ✗
PROVIDE POSITIVE ENCOURAGEMENT TO YOUR PLAYERS	TALK TO OPPOSITION PLAYERS OR BE INVOLVED IN ANY PHYSICAL ALTERCATIONS
BE BEHIND THE BOUNDARY FENCE DURING QUARTERS	YELL AT THE UMPIRES OR QUESTION OR MAKE COMMENT ON THEIR DECISIONS
WALK WITH THE UMPIRES ON & OFF THE GROUND	ALLOW PEOPLE IN THE CENTRE SQUARE DURING BREAKS
KEEP SPECTATORS & OFFICIALS AWAY FROM UMPIRES AT QUARTER BREAKS	ALLOW PEOPLE TO APPROACH UMPIRES AS THEY ENTER OR LEAVE THE FIELD



# TRAINERS

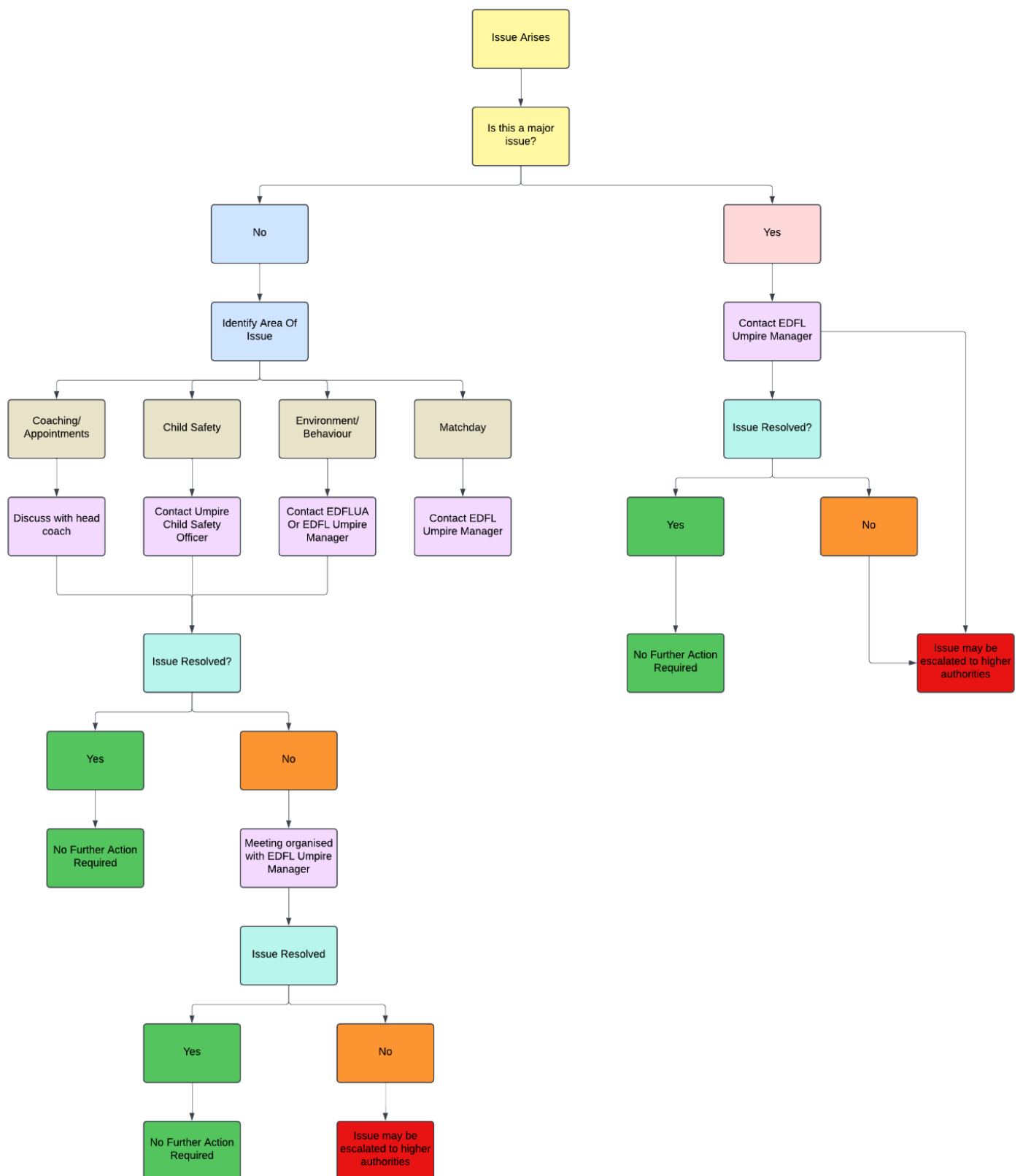
DO ✓	DON'T ✗
PROVIDE POSITIVE ENCOURAGEMENT TO YOUR PLAYERS	TALK TO OPPOSITION PLAYERS OR BE INVOLVED IN ANY ON-FIELD ALTERCATIONS
BE IN THE COACHES BOX IF NOT TENDING TO AN INJURED PLAYER	YELL AT THE UMPIRES OR QUESTION THEIR DECISIONS
PROVIDE WATER TO PLAYERS & UMPIRES AFTER GOALS	COACH YOUR PLAYERS
ALERT UMPIRES IF THERE IS THE NEED TO STOP THE GAME FOR A STRETCHER	BE ON THE GROUND IF NOT TENDING TO AN INJURED PLAYER



## RUNNERS

DO ✓	DON'T ✗
PROVIDE POSITIVE ENCOURAGEMENT TO YOUR PLAYERS	TALK TO OPPOSITION PLAYERS OR OFFICIALS DURING PLAY
ENCOURAGE PLAYERS TO PLAY IN THE RIGHT SPIRIT	YELL AT THE UMPIRES OR QUESTION THEIR DECISIONS
DELIVER MESSAGES FROM THE COACH TO PLAYERS	STAY ON THE GROUND FOR LONG PERIODS OF TIME
RETURN TO THE COACHES BOX IMMEDIATELY AFTER DELIVERING MESSAGES	COACH THE PLAYERS ON THE GROUND

## Conflict Resolution



Umpires are encouraged to report any issues to the appropriate party so they can be addressed as soon as possible.

## EDFL Extreme Weather Policy

Please ensure that you are aware of the full extreme weather policy which can be found on the EDFL website or TeamApp.

### Heat

The EDFL takes the health and wellbeing of its players, coaches, officials and volunteers very seriously and the following information outlines the elements of the EDFL's strategy to prevent heat stress in match conditions:

- When temperatures are forecast above 32°C at the scheduled commencement of the match (as per [www.bom.gov.au](http://www.bom.gov.au) or BOM App), clubs and umpires will be notified via the EDFL Website by no later than 5pm on the Thursday that the EDFL Extreme Weather Policy may be implemented.

If required, a formal announcement will be made on the EDFL Website between 9.30am and 11.00am on the day of the match advising clubs and umpires that the EDFL Extreme Weather Policy is to be adhered to.

### Lightning

1. If an EDFL umpire believes that there is any danger posed by lightning during or prior to the commencement of an EDFL match then they shall suspend or not commence the match.
2. A member of the umpiring panel shall inform the two clubs of the decision to suspend or not commence the match.
3. A member of the umpiring panel shall contact the EDFL Umpire Manager (or delegate) and/or an EDFL Football Operations Staff Member to inform them of the extreme weather situation.
4. The umpire shall then contact the EDFL Umpire Manager (or delegate) and/or an EDFL Football Operations Staff Member when there has been no consecutive thunder for 30 seconds.

5. This will then commence the 30-minute period that must be served before any decision to recommence an EDFL match is made.
6. The EDFL Football Operations department may instruct the umpires to cancel the remainder of the game, shorten quarters (if the match is to be recommenced) or complete the full remainder of the match depending on the circumstances of the match.
  - a. A general guide will be that a match can be delayed by up to 60 minutes before being cancelled providing that no other factors are involved which may limit the ability for the match to be completed (this may include, but are not limited to, inadequate lighting, games scheduled following the match or unsafe conditions).
7. If the match is cancelled and/or unable to commence due to lightning (as determined by the EDFL Extreme Weather Policy), EDFL Football Operations staff shall determine how the premiership points for the match shall be allocated in accordance with the AFL Laws of the Game.

### **Sun / UV protection**

A Person may be exposed to ultraviolet (UV) light when participating in Australian Football. Prolonged exposure to UV light can result in sunburn, chronic sun damage to both skin and eyes and increase the risk of precancerous and cancerous skin lesions. Sport-specific factors such as increased sweating can increase skin photosensitivity and result in an increased risk of sunburn. A Person should undertake sun protection measures for all outdoor activities, particularly when the UV levels are 3 or greater. The World Health Organisation (WHO) outlines the UV radiation exposure categories or UV Index (UVI) with levels from 0 low to 11+ extreme.

### **Exposure Category UVI Range**

Exposure Category	UV Range
Low	<2
Moderate	3 to 5

High	6 to 7
Very High	8 to 10
Extreme	11+

Australian Football is only one contributor to a Person's overall sun exposure and a Person should apply these guidelines to non-football related leisure and work activities.

#### Coach and Umpire responsibility

- (a) Where possible, groups should reduce sun exposure for Players and Football Officials by scheduling outdoor training sessions outside of times of peak UV levels (i.e. early morning or late afternoon noting that UV levels are higher in the middle of the day).
- (b) Training sessions undertaken when UV levels are high should be reduced in duration where possible.
- (c) Clubs should provide shade for Football Officials participating at training sessions and Matches. Additional shade structures on the benches for Matches should also be considered when matches are played when high UV levels are 3 or greater.
- (d) At times when Umpires and Football Officials have an increased risk of sun exposure, the following additional measures should be employed:
  - i. SPF 50+ water-resistant sunscreen should be available at all outdoor training sessions and matches when the UV levels are (or are expected to be) greater than 3. Expired sunscreen should not be used.
  - ii. Players and Football Officials should be educated to apply a generous amount of sunscreen to all exposed skin at least 30 minutes before sun exposure and sweating occurs and reapplied every 2 hours.
  - iii. Zinc based sunscreens can be used as an alternative and applied to high exposure areas such as the face.
  - iv. Where possible, long-sleeved clothing, with Ultraviolet Protection Factor (UPF) should be worn. A UPF rating above 15 is suitable however the EDFL recommends a 50+ UPF rating.

- v. Players and Football Officials should wear a hat and sunglasses for outdoor training sessions where practical.

Players and Football Officials should perform regular self-examination of their skin and consult a doctor if they become aware of any changes. These might include new freckles or moles or a change in size, colour or shape.

## Feedback

Umpires will be observed during the season to provide strength areas and areas of improvement. Where possible umpires will be provided both written and verbal feedback as part of this. There will be restrictions as to how many observations that an umpire receives around location, availability of umpire/observers as well as how well the umpire follows the EDFL Umpire Values. Umpires will be assessed on the following:

### **Field Umpires:**

1. Decision Making
2. Management
3. Communication/Skills
4. Movement/Positioning
5. Teamwork
6. EDFL Umpire Values

### **Boundary Umpires:**

1. Decision Making
2. Communication/Skills
3. Movement/Positioning
4. Teamwork
5. EDFL Umpire Values

### **Goal Umpires:**

1. Decision Making

2. Communication/Skills
3. Movement/Positioning
4. Teamwork
5. EDFL Umpire Values

## Finals Selection

Areas considered for finals selection include:

1. Game day performance
2. Commitment and demonstration of EDFL Umpire Values
3. Reliability and availability to umpire (people that miss a large period of the season may not be selected for finals depending on the scenario)
4. Performance and form heading into finals

## Forfeit and Non-Completion of Matches

Scenario	Process
Forfeit before game	Umpires will be contacted and alerted to the forfeit and they will not need to attend. The umpire may be paid depending on the timing of the forfeit
Forfeit on game day	If a club does not have the minimum players by 20 minutes after the scheduled start time, they will forfeit the match. The umpires will need to complete the match paperwork and contact the EDFL official. The club will be charged for a forfeit.
Reduction of players after start of match	If a club is reduced to less than the minimum players during an EDFL game, the game will be forfeited. The umpires will need to complete the match paperwork and contact the EDFL official. The club will not be charged for a forfeit.
Major injury	If, during the course of an EDFL match, an injury occurs that results in a delay of greater than 30 minutes, then the game will be called off. The umpires will need to complete the match paperwork and contact the EDFL official.
Extreme weather	If, during the course of an EDFL match, the EDFL's Extreme Weather Policy is needed to be implemented and the game is unable to be completed, the umpires will need to complete the match paperwork and contact the EDFL official.
Other	If, during the course of an EDFL match, an incident occurs that results in the game being called off, the umpires will need to complete the match paperwork and contact the EDFL official.

**Umpires should not discuss the result of the match with competing clubs. The EDFL are responsible for determining the result of games that are not completed.**

**Note: During finals matches the EDFL will determine how/if matches are altered/completed**

## Hudl

In season 2025 the EDFL will be utilising the online platform Hudl to provide vision, coaching and feedback to umpires in the league. All registered umpires will be added to the EDFL Hudl platform and it will be up to the individual umpires to maximise its use.

- All EDFL senior matches that are recorded will be uploaded on to the platform each week and will be removed after that week.
- Coaching vision will be uploaded on to the platform as required.
- Umpires will be able to cut vision from their matches and send to coaches for clarification.

## Injury

When an EDFL umpire is injured at training or during the course of an official EDFL match they must complete the following process:

1. Notify the EDFL umpiring department (EDFL Staff Member) and their coach as soon as possible after the injury has occurred (two days at the most).
2. Complete the EDFL notice of injury form as soon as practical (ideally within one week of the injury occurring) including as much information as possible (especially witnesses to the injury).
3. Obtain certificate of capacity(ies) from doctor/physiotherapist/medical practitioner (this needs to be done regularly during the process)
4. Should you require treatment prior to the completion and acceptance of necessary paperwork, please keep receipts of expenses.
5. After the completed register of injury form and certificate of capacity forms have been received by the EDFL, a work cover form can be obtained if needed.
6. After the completed work cover form has been received by the EDFL, Work Safe may ask for additional information as needed.
7. Any paperwork that an umpire receives as part of the work cover claim needs to be sent to the EDFL as soon as possible to help with the process.

8. Obtain a final medical certificate release form from the doctor/physiotherapist, ending treatment for the injury and forward that to the EDFL. This would be a Return-to-Work advice that allows you to recommence training & games.

**\*\*An injured umpire will not be eligible to umpire games until a completed certificate of capacity has been provided to the EDFL (they will be marked as unavailable on Officials HQ until this occurs). \*\***

**\*\*Any delays in completing steps in the process may result in delays or non-acceptance of work cover claims.\*\***

## Last Disposal

A free kick will be paid against a player who disposes (kicks or handballs) of the ball over the boundary line between the 50m arcs, without it being touched by another player. If the ball goes out of bounds within the 50m arcs the ball will be thrown in (if there are boundary umpires) or brought in 15m and balled up. For all games in the competitions listed below the last disposal rule **MUST** be played even if there are EDFL boundary umpires appointed.

### Juniors

In junior competitions, clubs will no longer need to provide volunteer boundary umpires. If the ball comes off hands, or the umpire is unsure as to who disposed of the ball last, then the umpire will bring the ball in 15m and ball the ball up.

### Women's and Thirds

In women's and thirds competitions, if the ball comes off hands, or the umpire is unsure as to who disposed of the ball last, then the following will happen:

- if there is an EDFL boundary umpire allocated, then they will throw the ball in from where the ball went out;
- if no EDFL boundary umpire is allocated, then the field umpire will bring the ball in 15m from where the ball went out and ball the ball up.

## Process

In games in which there is a boundary umpire, the boundary umpire will signal that the ball has gone out of bounds and then indicate to the field umpire which team is receiving the free kick by signalling in the same way as a field umpire would. The field umpire will pay the free kick by signalling the same way as if it was out on the full.

## Match Communication Units

The EDFL has purchased a number of sets of match communication units which are aimed at improving the umpiring experience for umpires. The purpose of these are to help umpires develop their communication skills, allow for coaching of umpires on specific areas of improvement and helping teamwork amongst umpires. Umpires using the match communication units need to remember the following:

- They are there to be used to assist umpiring performance
- The units need to be looked after and should be returned in the same state as they were collected

Umpires that do not use the units in an appropriate manner may lose the ability to use them in the future.

## Match Paperwork

### Match Report

- The match paperwork will again be completed using Officials HQ in Season 2025
- Umpires need to complete the paperwork on the day of their game
- It is essential to take clear photos of the team sheets as well as the timekeepers card as part of the paperwork
- If you have any issues with the match paperwork please contact the EDFL contact ASAP.

## Best & Fairest Voting

- In all games above U10 level, the field umpires are required to award Best & Fairest votes to the three best players on the ground.
- The votes will be submitted through Officials HQ and is a key part of the umpiring job.
- Make sure that you discuss during the game who are the best players on the ground to ensure that the best players receive the votes.
- Umpires should not share who they awarded votes to after the game has been completed.

## Incident Reports

- Umpires can enter an incident report as part of the match report that will be sent through to the EDFL.
- This can be used for serious incidents that occur during matches that get reported to umpires that were not seen on the day of the match.
- If there is a major injury, melee or any serious allegations please make sure that you enter an incident report so that the EDFL is aware.
- This does not replace a report. If an umpire sees a reportable offence on the day, they **MUST** report it. If the EDFL believes a reportable offence was seen by the umpire on the day it may still be sent to the tribunal/set penalty offered.

## Match Preparation

### Arrival

Group	Arrival
Juniors	Minimum 30 minutes before scheduled start time
U18.5, Reserves & Thirds	Minimum 45 minutes before scheduled start time
Seniors	Minimum 60 minutes before scheduled start time

## Checklist

Item	Packed
Shirt	
Shorts (Field & Boundary Umpires)	
Whistle (Field & Boundary Umpires)	
Sweatbands (Field & Boundary Umpires)	
Socks (Field & Boundary Umpires)	
Notebook and pen	
Pants (Goal Umpires)	
Scorecard (Goal Umpires)	
Flags (Goal Umpires)	
Drink	
Boots/Runners	
Cards (Field Umpires)	

## Melee Rule

### For all senior competitions, U14s and U16s

A melee is an incident which occurs prior to, during or following the completion of an EDFL match, (including the quarter time, half time and three-quarter time intervals) and:

- Involves EIGHT or more players and/or officials of the opposing teams who
  - Are aggressively or forcefully engaging in grappling, pushing, shoving, tripping, wrestling or other like acts which would potentially constitute a reportable offence by a player or official of either team.
  - Occurs over a sustained period of time where such incident has the effect of preventing or hindering the start or continuation of the game.
- Is an incident deemed by an umpire or EDFL Official that is likely to:
  - a) Prejudice the interests or reputation of the EDFL or brings the game of football into disrepute

Umpires are to report (on the official match report sheet) any melee (as above) that occurs on the ground. Clubs will be fined \$100.00 for the first offence in a game, \$200.00 for a second offence in that game and \$300.00 for each additional offence in that game. Depending on the circumstances of the incident(s) it is up to the Umpire's discretion whether to impose a fine on either club or both clubs as per the above definition.

In using this discretion, the Umpires shall have regard to the following factors:

- a) The team whose player/s and/or officials instigated, provoked and/or prolonged the incident that led to the melee and
- b) Whether the number of player/s and officials from one team involved in the melee were significantly greater than the number of players and/or officials from the opposing team

**\*\*Nothing in this rule precludes an umpire from reporting a player for a reportable offence committed during a melee\*\***

## Officials HQ

### Setting Leaves

As the EDFL has many game times commencing across the day/weeknight games, the umpires are required to set their 'leave' in the Officials HQ system to enable us to appoint around any prior commitments (playing football etc.) By default, the system has you as available, unless altered otherwise.

To set leave, on the Officials HQ platform, head to Communication platform > Leaves > select specific date > Add leave. Follow the prompts from there to add your leave for when you will be unavailable. To do a specific time of a day, you will need to untick 'Full day' and add the times you will be unavailable.

**Please note:** When setting leave, you will need to consider not just the event, but travel times etc. I.e. For a football match, you will need to consider the travel time to and from

the game, the time they want you there (30 minutes before etc.), recovery time and travel time to your Umpire appointment.

If you set your leave from 10:00am to 12:00pm, this means that we can appoint you to a game from 12:01pm onwards or a game that finishes before 10:00am.

### WWCC Details

To add your WWCC details, head to 'My profile' > Accreditations > Add accreditation, and in 'Accreditation type', select 'Working with Children' and add the expiry date in the 'End date' section and add the card number in 'Reference'. You may also upload a photo of your WWCC card, however it is not compulsory to do so.

## Pathway Programs

The EDFL has a number of development pathway programs that umpires may wish to pursue as part of their umpiring journey. Umpiring has the ability to be a career for people who progress to the AFL. The EDFL has a number of umpires who have transitioned from umpiring at the EDFL to the VFL, AFLW or AFL. If you are interested in these programs, please let Michael know.

### AFL Vic Pathway Program

The AFL Vic Pathway Program is development program aimed at identifying umpires that have the potential to transition to VFL Development List in the next 1-2 years. This is an important step in the talent development pathway and the program has a maximum of 22 spots per discipline across the state so there are not a lot of spots.

Criteria for the program includes:

- Minimum age is turning 18 in the year of the program
- Umpire has demonstrated an interest in being involved in the Umpire talent pathway

- Umpire has clearly demonstrated a commitment to developing their umpiring by regularly attending training, participating in group coaching, engaged in and sought individual feedback.
- Umpire demonstrates leadership qualities during training or match days, and has always been inclusive in their dealings with others
- Currently ranked within top 5% of umpiring discipline
- Umpire achieved a season final appointment that's a reflection of their current performance expectations

Please contact Michael if you would like any information about this program.

### Junior Interleague Umpire Program

A development program launched in 2024 was the Junior Field Interleague Umpire Program. This program was aimed at providing additional development opportunities for junior field umpires through the AFL Victoria Metro Junior Development Series. Goals of this program are to:

- Provide additional coaching and development opportunities for some of our talented junior field umpires
- Identify junior field umpires who have the potential to progress to umpiring senior football in the EDFL

Selection to this will occur during the grading matches with training sessions to occur during from the start of May. Umpires will be selected based on:

- Expressing interest in progressing further in umpiring
- Showing commitment to umpiring by regularly attending training and regularly accepting appointments
- Performance on game days
- Umpiring at a level appropriate for the AFL Victoria Metro Junior Development Series
- Must umpire junior football in the EDFL
- Must display the EDFL Umpire Values

Junior coaches will be selecting people for this program during the first part of the season.

### Junior To Senior Pathway Program – Junior Field

The EDFL supports junior umpires who wish to commence umpiring senior matches. This will often begin with umpiring U18.5 matches with a more experienced umpire. Umpires will not be appointed to senior games until the Umpiring Department are confident that the umpire is confident and competent to umpire these games for the best interests of all parties.

The process for this pathway is:

1. Discuss your interest with one of the junior coaches or observers including any availability you may have
2. The coach/observer will pass this information on to the junior head coach
3. The junior head coach or head of umpiring will observe the umpire in a game
4. The head of umpiring will make a recommendation to the head coach about whether the umpire is ready for senior football.
5. If the umpire is ready they will be appointed with a more experienced umpire to senior games.

Please discuss with one of our junior coaches if you have an interest in umpiring senior football.

### Pay

Umpires are paid weekly during the season and in finals. Match payments are calculated based on the level of game umpired (see below). Important information for umpire pays:

- It is the responsibility of the umpire to ensure their bank account information is correct

- Pay for preseason matches is generally done at the end of all preseason matches.
- In weeks where there are public holidays there are sometimes some delays in pays coming through due to banks being closed.
- Pays generally come through on a Friday following the game. If it is slightly later than this, don't stress. If it gets to the Tuesday (e.g. ten days following the game) and pay hasn't come through, then contact the umpiring department.

DIVISION	FIELD UMPIRE				Single Field Umpire Additional Fees		
	Practice	Home & Away	Semi/Prelim	Grand Final	Where a field umpire officiates as a single umpire, the following additional fees will be applied		
Premier Men	\$ 106	\$ 176	\$ 194	\$ 220		Premier Men	\$ 80
Premier Women	\$ 74	\$ 124	\$ 136	\$ 155		Premier Women	\$ 55
Premier Res	\$ 71	\$ 119	\$ 131	\$ 149		Premier Res	\$ 53
Division 1 Men	\$ 90	\$ 150	\$ 165	\$ 188		Division 1 Men	\$ 67
Division 1 Women	\$ 71	\$ 118	\$ 130	\$ 148		Division 1 Women	\$ 53
Division 1 Res	\$ 64	\$ 106	\$ 117	\$ 132		Division 1 Res	\$ 47
Division 2 Men	\$ 85	\$ 141	\$ 156	\$ 176		Division 2 Men	\$ 64
Division 2 Women	\$ 67	\$ 112	\$ 122	\$ 140		Division 2 Women	\$ 50
Division 2 Res	\$ 64	\$ 106	\$ 117	\$ 132		Division 2 Res	\$ 47
Women's Res	\$ 64	\$ 106	\$ 117	\$ 132		Women's Res	\$ 47
Thirds	\$ 61	\$ 101	\$ 112	\$ 127		Thirds	\$ 46
Under 18.5	\$ 61	\$ 101	\$ 112	\$ 127		Under 18.5	\$ 46
Under 16	\$ 53	\$ 88	\$ 97	\$ 111		Under 16	\$ 40
Under 14	\$ 45	\$ 75	\$ 83	\$ 93		Under 14	\$ 33
Under 12	\$ 41	\$ 69	\$ 75	\$ 85		Under 12	\$ 31
Under 10	\$ 37	\$ 62	\$ 68	\$ 77	Example	Premier Women	Regular fee (\$124.00) + additional payment (\$53) = \$177

DIVISION	BOUNDARY UMPIRE				GOAL UMPIRE			
	Practice	Home&Away	Semi/Prelim	Grand Final	Practice	Home&Away	Semi/Prelim	Grand Final
Premier Men	\$ 69	\$ 115	\$ 126	\$ 144	\$ 58	\$ 97	\$ 107	\$ 121
Premier Women	\$ 49	\$ 81	\$ 88	\$ 100	\$ 41	\$ 68	\$ 75	\$ 85
Premier Res	\$ 47	\$ 78	\$ 85	\$ 96	\$ 40	\$ 66	\$ 72	\$ 82
Division 1 Men	\$ 58	\$ 97	\$ 108	\$ 122	\$ 50	\$ 83	\$ 91	\$ 104
Division 1 Women	\$ 46	\$ 77	\$ 84	\$ 96	\$ 39	\$ 65	\$ 72	\$ 81
Division 1 Res	\$ 41	\$ 69	\$ 76	\$ 86	\$ 35	\$ 58	\$ 65	\$ 73
Division 2 Men	\$ 55	\$ 92	\$ 101	\$ 115	\$ 47	\$ 78	\$ 85	\$ 97
Division 2 Women	\$ 44	\$ 73	\$ 80	\$ 90	\$ 37	\$ 61	\$ 67	\$ 77
Division 2 Res	\$ 41	\$ 69	\$ 76	\$ 86	\$ 35	\$ 58	\$ 65	\$ 73
Women's Res	\$ 41	\$ 69	\$ 76	\$ 86	\$ 35	\$ 58	\$ 65	\$ 73
Thirds	\$ 40	\$ 66	\$ 73	\$ 82	\$ 33	\$ 55	\$ 62	\$ 70
Under 18.5	\$ 40	\$ 66	\$ 73	\$ 82	\$ 33	\$ 55	\$ 62	\$ 70
Under 16			\$ 64	\$ 72			\$ 53	\$ 62
Under 14			\$ 53	\$ 60			\$ 46	\$ 55
Under 12			\$ 49	\$ 58			\$ 43	\$ 53
Under 10			\$ 44	\$ 50			\$ 37	\$ 46

## Playing Conditions

### Minimum/Maximum Playing Numbers On Field

Competition	Minimum Numbers	Maximum Numbers
Senior Men's	14	18
Senior Women's	12	16
Reserve Men's	14	18
Reserve Women's	12	16
U18.5 Men's	14	18
U18.5 Women's	12	16
Thirds	14	18
U16 Boys	14	18
U16 Girls	12	18
U14 Mixed	14	18
U14 Girls	12	18
U12 Mixed	14	18
U12 Girls	12	18
U10 Mixed	14	18
U10 Girls	12	18

### Quarter Length & Break Lengths

Competition	Quarter Length	Break Lengths
Senior Men's	20 minutes + time on	5-15-5
Senior Women's	20 minutes – no time on	5-15-5
Reserve Men's	25 minutes – no time on	5-15-5
Reserve Women's	20 minutes – no time on	5-15-5
U18.5 Men's	20 minutes – no time on	5-15-5
U18.5 Women's	17 minutes – no time on	5-15-5
Thirds	20 minutes – no time on	5-15-5
U16 Boys	20 minutes – no time on	5-10-5
U16 Girls	15 minutes – no time on	5-10-5

U14 Mixed	15 minutes – no time on	5-10-5
U14 Girls	15 minutes – no time on	5-10-5
U12 Mixed	15 minutes – no time on	5-10-5
U12 Girls	12 minutes – no time on	5-10-5
U10 Mixed	12 minutes – no time on	5-10-5
U10 Girls	12 minutes – no time on	5-10-5

### **Time On**

Time on shall only be applied in the following situations for games that it normally does not apply to:

- A stretcher has entered the playing field
- A player count has been called

### **Finals Extra Time Procedure**

In the event of a tie in a finals match, extra time will be played comprising of two three-minute halves at each end. 'Time on' will only be applied in matches where 'time on' is normally recorded. Coaches may only enter the field of play to address players at the end of the fourth quarter, but must have returned to the coaches box by the time the goal umpires are in position for the start of extra time. Coaches will then not be permitted to enter the field of play until a match result is obtained and winner determined. Water persons and runners can deliver water/messages. Players may use the interchange bench during any break of play before or during extra time.

The following procedure will apply in the event of a tied finals match.

1. At the end of the fourth quarter, the goal umpires will meet to confirm a tied score.
2. Once a tied score is confirmed, extra time shall commence comprising of two three-minute halves at each end. For the first half of extra time, teams will kick toward the opposite end from what they did in the fourth quarter.

3. At the completion of the first half of extra time, the goal umpires will meet to confirm the scores. Teams will swap ends during this break in play for the beginning of the second half.
4. At the completion of the second half of extra time, the goal umpires will meet to confirm the scores and determine the winner. If scores still remain tied, teams will swap ends and another extra time comprising of two three-minute halves at each end will commence, with the first team to score a goal or behind deemed the winner (golden point). Timekeepers shall immediately sound the siren following the 'golden point'.
5. Step 4 will be repeated until a result is obtained.

## Player Uniform & Equipment

Uniform/Equipment	Rule
Jumper	Must be a unique number between 1 and 99
Male Shorts	Home – black or team coloured Away – white shorts unless a clash
Female Shorts	Black, white or team coloured
Gloves	Require approval from the EDFL
Undergarments	Must not be dangerous or cause a colour clash with the opposing team
Mouth Guards	Required in junior football, recommended in other grades
Protective Equipment	Helmets – allowed in all grades Other – require approval from the EDFL
Hair	Must not hide the player's number or be dangerous in the opinion of the umpires
Jewellery	Not permitted even if taped over
Nails	Must be short and smooth
Boots	No metal studs allowed
Religious	Hijabs, long sleeve jumpers and full skins allowed to be worn

## Reportable Offences

Yellow Card Offence - May be heard by Independent Tribunal (1 match deduction for acceptance of base sanction)		
Rule	Base Sanction	Sanction With Guilty Plea
22.2.2 (a) (i) Striking another person (MINOR - High/Groin)	3 matches	2 matches
22.2.2 (a) (i) Striking another person (MINOR - Body)	2 matches	1 match
22.2.2 (a) (iv) Charging an opponent	2 matches	1 match
22.2.2 (a) (v) Engaging in rough conduct against an opponent	3 matches	2 matches
22.2.2 (a) (vi) Bumping or making forceful contact to an opponent from front-on	3 matches	2 matches
(xi) Tripping another person whether by hand, arm, foot or leg	2 matches	1 match
22.2.2 (h) Using abusive, insulting, threatening or obscene language towards or in relation to an umpire (MINOR)	2 matches	1 match
22.2.2 (m) Attempting to strike another person	1 match	Reprimand
22.2.2 (n) Attempting to kick another person	2 matches	1 match
22.2.2 (o) Attempting to trip another person whether by hand, arm, foot or leg	2 matches	1 match
22.2.2 (q) Engaging in a melee or wrestling	2 matches	1 match
22.2.2 (v) Using abusive, insulting, threatening or obscene language	2 matches	1 match
22.2.2 (w) Use of obscene gesture	2 matches	1 match
22.2.2 (z) Intentionally shaking, climbing or otherwise interfering with a goal or behind post	1 match	Reprimand
22.2.2 (cc) Any act of misconduct (MINOR)	2 matches	1 match
Red Card Offence - Must be heard by Independent Tribunal (1 match deduction for guilty plea may apply at tribunal)		
Rule		
22.2.2 (a) (i) Striking another person (MAJOR)		
22.2.2 (a) (ii) Kicking another person		
22.2.2 (b) Making contact with, or striking an umpire		
22.2.2 (e) Attempting to strike an umpire		
22.2.2 (g) Behaving in an abusive, insulting, threatening or obscene manner towards or relation to an umpire		
22.2.2 (h) Using abusive, insulting, threatening or obscene language towards or in relation to an umpire (MAJOR)		
22.2.2 (aa) Failing to leave the playing surface when directed to do so by a field umpire		
22.2.2 (cc) Major misconduct (e.g. headbutting, eye gouging, kneeling, stomping, making contact with an injured player, scratching, pinching spitting, etc.)		

### Notes:

- Yellow card offences will be offered a base sanction (set penalty) which the player can accept on the day or before 12pm on the Monday following the match.
- If the player accepts the set penalty they receive a one match reduction in their penalty.
- Please ensure that you are accurate in the charge that you select when completing a report.

## Spirit Of Fair Play Policy

The EDFL 'Spirit of Fair Play Policy' is essentially designed to even up the number of players on the field so that if one team is struggling for numbers in a particular game (e.g. there are only 15 players available), then the opposition team can only field one additional player on the field, in this example 16 players (15 + 1).

This policy was introduced for the 2023 season and applies to all competitions except senior men's matches in Premier Division, Division One and Division Two.

The full policy, including the full list of provisions contained within it, is available on the EDFL website: <https://essendondfl.com.au/policies-resources/>

If a team is clearly not obeying this policy we ask umpires to make note of this on the match report so that operations staff can follow up as potential sanctions may be applied.

## Starting Positions

In all EDFL matches, players must be in the correct starting positions at all centre ball ups (e.g. after goals, start of quarters). For matches other than U18 Girls, Reserves Women's and Senior Women's there must be a maximum of six (6) players in each of the three zones (defence, midfield and forward). In U18 Girls, Reserves Women's and Senior Women's there must be a maximum of five (5) players in the defence and forward zone and six (6) players in the midfield zone.

- In all situations there must be a ruck and a player in each of the goal squares.
- A team can start with less than the maximum number of players on the ground and bring a player on as soon as the ball has been balled up.
- If a player is injured and is being attended to by medical personnel, umpires should wait until the player is replaced and the replacement player is in the correct starting position (in line with blood rule guidelines).

- If a player is within 15m and making and is demonstrating intent to get to position, wait for the player to make it to their starting position.
- If both teams are late, then no warning or free kick should be given.

### Warnings

If a team breaches the starting position requirements they will be given one (1) warning per match. A warning shall occur if a team has breached the starting positions requirements when the field umpire is ready to walk in and ball the ball up. The umpire shall indicate a starting positions warning by blowing their whistle and walking to the ruck and alerting them to the warning.

- A warning will still occur if a breach occurs in the last quarter of a match.
- After a warning has occurred, the umpires must wait until the team that has breached the starting positions has returned to the correct positions.

**Note: The breach should be blown before the ball has been balled up.**

### Free Kicks

If a team breaches the starting position requirements after receiving a warning earlier in the game, the opposing team will receive a free kick in the centre of the ground. The free kick will go to the ruck.

- After a free kick has occurred, the umpires must wait until the team that has breached the starting positions has returned to the correct positions before allowing the team to take the free kick.
- If, in the opinion of the umpires, the team is deliberately wasting time by breaching the starting position requirements, the umpire shall award the free kick and a 50m penalty.
- If, once the starting positions requirements have been met by both teams, a player leaves their starting position, a free kick shall be awarded to the ruck of the opposing team in the centre circle. There will be no warnings for a zone

breach. In this situation, the umpires do not need to wait for the team to return to the correct starting positions.

- If a free kick is paid after a goal has been scored then the umpires do not need to wait for the teams to return to the correct starting positions.

## Team App

Team App will be used throughout the season to pass on information to umpires.

Resources, documents, appointment opportunities, specials opportunities, updates, and links will be posted on Team App throughout the year to keep umpires up to date. To access the Team App download it on your platform or search for it on the internet and then search for EDFL Umpires.

## Training

The EDFL will hold umpiring training on a weekly basis unless otherwise advised by the EDFL Umpiring Department. Training is an important part of the development of umpires and will be considered during finals appointments. Training will be weekly at the following times:

### **Junior Field (pick the most convenient option):**

Every Monday 5pm at the following locations:

- Highgate Recreation Reserve #2 – Craigieburn
- John McMahon Reserve – Sunbury
- Burnside Heights Recreation Reserve
- Cole Reserve – Coburg
- Jacana Reserve – Jacana
- Walter St Reserve – Ascot Vale

**OR**

Every Wednesday 5pm at Windy Hill

## **Senior Field**

Every Monday and Wednesday 6pm at Windy Hill

## **Boundary**

Every Monday and Wednesday 6pm at Windy Hill

## **Goal**

Every Monday and Wednesday 6pm at Windy Hill

## **Notes:**

- There will be no training on public holidays
- Training at Windy Hill will move to Tuesdays and Thursdays for Senior Field, Boundary and Goal on the week of the 8<sup>th</sup> of April.
- Training for junior field at Windy Hill will move to Tuesdays on the week of the 8<sup>th</sup> of April.
- Junior training centres will mainly be focused on junior field umpiring. There will be some boundary umpire programs provided but this will be minimal
- It is likely that all junior training will only be at Windy Hill during the school holidays

## **Tribunal**

Are held at EDFL Headquarters - Level 1, 78A Napier Street Essendon (Windy Hill) - Tuesday nights at 7.00pm. Umpires are required to attend the tribunal if they have player reports, as part of their normal umpiring responsibilities. If an umpire is unable to attend they need to contact the EDFL ASAP so that alternate arrangements can be made.

**An umpire advocate will be organised to attend the tribunal with all junior umpires and senior umpires as required.**

Umpires attending the EDFL tribunal will be dressed in an appropriate manner - black pants, a shirt or EDFL polo shirt, jumper or jacket that reflects some form of EDFL apparel > All clothing to be clean and respectable. A tribunal guide has been uploaded to Team App with information to help prepare umpires for the tribunal.

\*\* Remember that you are representing all umpires when you attend a tribunal hearing\*\*

## Working With Children Check

It is **COMPULSORY** under government legislation for all EDFL umpires over the age of eighteen (18) and all umpire coaches actively involved in the EDFL to have and retain a current Working With Children Check (WWCC) to undertake your role.

Only umpires, coaches and officials who are exempt from providing a WWCC under current legislation exemptions do not need to apply for the check as they already are eligible as a requirement of their normal employment.

However, the exemptions accepted by the EDFL are limited to (along with the conditions covering the following professions in the relevant legislation):

- Current registered Teachers & Victorian or Australian Federal Police Officers

**Umpires are required to put their WWCC information on Officials HQ as part of their registration.**

## Uniform

The EDFL is working with new uniform supplier ISC to deliver additional and more appropriate uniform options to EDFL umpires for season 2025. This will include female friendly options for shirts and socks as well as additional off-field apparel options. We expect there will be some teething issues with the change to the new supplier and appreciate your patience with the changeover process.

For footwear, the preference for field/boundary umpires is white shoes/boots and goal umpires is black shoes/boots; however, we understand that many people will be using their playing boots which is acceptable. We would prefer shoes/boots that are clean and are not going to draw unnecessary attention to umpires where possible.

## On Field Uniform

In season 2025 the EDFL will be trialling a new uniform in all junior competitions (e.g. U16 and below). Umpires will not be required to tuck their shirts in and there will also be calf-length socks instead of the traditional socks. We are recommending that all umpires in junior competitions move to this new look to ensure consistency. Umpires will still be required to ensure that their uniform is clean, neat and presentable.

### Senior Competitions (e.g. U18.5 and above)

Uniform Item	Comment
Shirt	Short and long sleeve options available
Shorts	Must be tucked in
Socks	Traditional only
Sweatbands	At least one to be worn
Undergarments	Preference is skin colour or black undergarments
Jacket/Hoodie over shirt	Not permitted
Jewellery	Not permitted
Footwear	Field and boundary umpires – Preference is shoes/boots are to be predominately white and clean  Goal umpires - Preference is shoes/boots are to be predominately black and clean

### Junior Competitions (e.g. U16 and below)

Uniform Item	Comment
Shirt	Short and long sleeve options available
Shorts	No tuck in
Socks	Calf length
Sweatbands	At least one to be worn
Undergarments	Preference is skin colour or black undergarments

Jacket/Hoodie over shirt	Not permitted
Jewellery	Not permitted
Footwear	Preference is white footwear where possible